

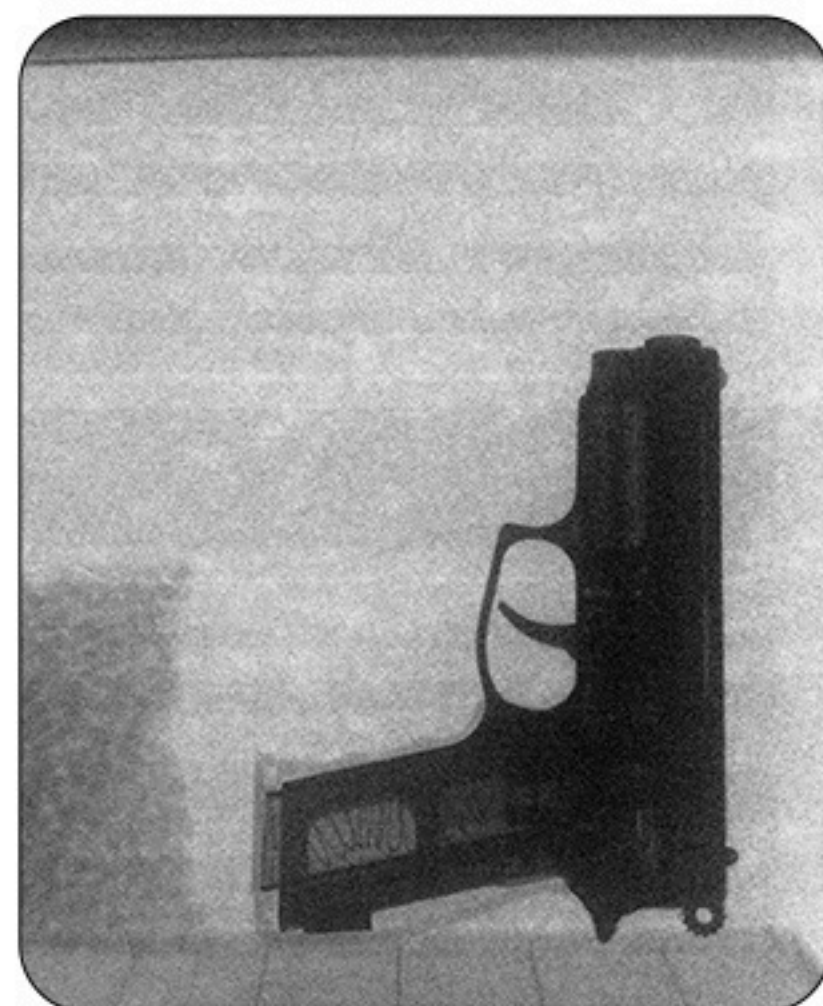
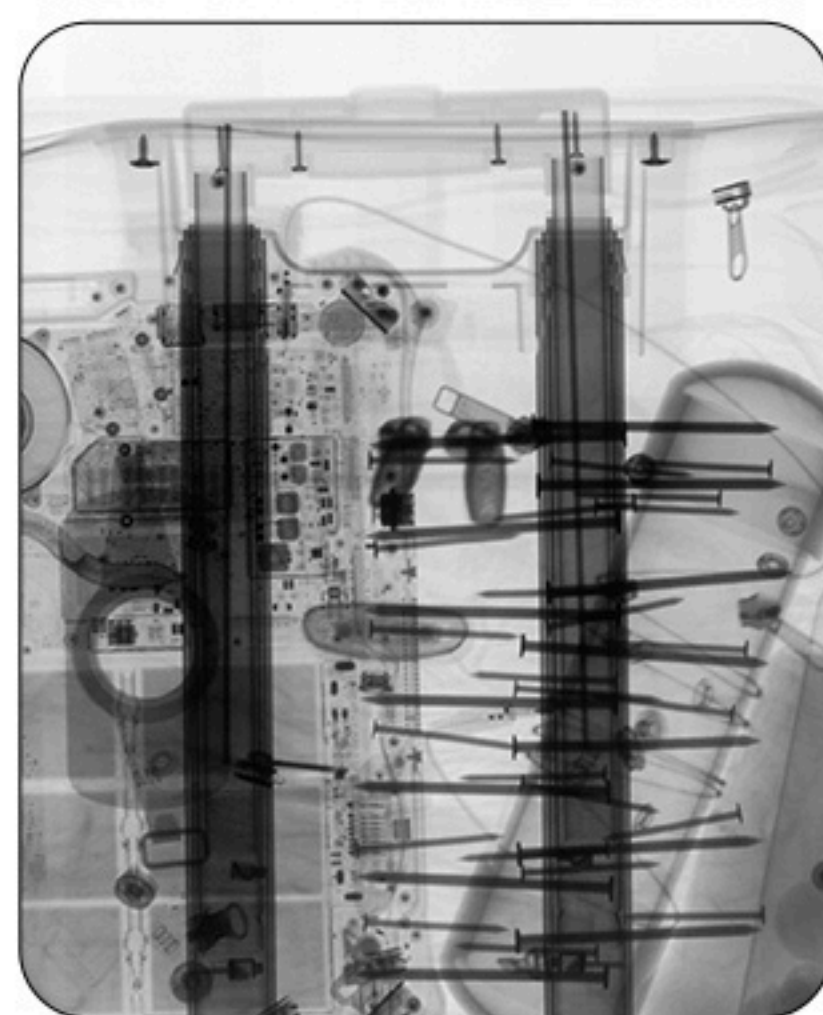
PXT

The most
POWERFUL
HANDHELD
TRANSMISSION

X-RAY IMAGER



PXT TRANSMISSION



Maximum handheld performance

See through up to 30mm of steel and find smaller anomalies in combination with MTP+, the PXT is the most powerful handheld transmission x-ray solution with embedded touchscreen. With the power of traditional box scanners all in an ultra portable and handheld point and shoot scanner.

Intuitive and powerful software

Modern and intuitive software interface that makes it easy to filter and enhance images to get the most out of each image. All right at your fingertips on the device with it's 7" ultra-bright touchscreen

Unparalleled safety

Our patent pending revolutionary shielding protects operators from leakage and scatter radiation and exceeds all industry safety standards without compromising on image quality or device size and weight.

Deploy anywhere in seconds

Reduce inspection time without the need to bring objects to box scanners, or fixture traditional unshielded portable x-ray generators.



Supplied & Serviced by
www.toddresearch.co.uk



Todd Research Ltd
9C Trafalgar Way | Bar Hill | Cambridgeshire | CB23 8SQ
Tel: +44 1480 832202
Email: xray@toddresearch.co.uk

SPECIFICATIONS

PXT



OPERATING CONDITIONS

- **Ingress Protection:** IP54
- **Operating Temperature:** -20 °C (-4 °F) to 60 °C (140 °F)
- **Storage Temperature:** -40 °C (-40 °F) to 70 °C (158 °F)

STANDARD ACCESSORIES

- Two (2) rechargeable batteries
 - 1-Bay rapid charger
 - Quick connect adjustable wrist & shoulder straps
 - Data transfer cable
 - Lockable transport case (IP67, MIL-SPEC, Airline carry-on)
 - Quick start guide & operators manual
- ** Additional accessories available for purchase

TECHNICAL OVERVIEW

- **Exposure time range:** 0.5~2.0 sec
- **Focal spot:** 0.75mm
- **X-ray beam:** 30deg FOV cone
- **Maximum duty cycle:** 180 scans per hour in handheld use at full power
- **Tube Voltage:** 90-140kv
- **Tube Current:** 5-70uA
- **Tube Power:** 10W
- Flexible image export options
- Field of view alignment line lasers and camera live view

COMPLIANCE

- CE compliant
- Compliant with all applicable U.S. Federal health and safety standards.
- ANSI, ICRP, NCRP and Euratom radiation safety standards for annual dose for general public

SCANNER DIMENSIONS & WEIGHT

- **Length:** 19.6 cm (7.7 in)
- **Width:** 28.2cm (11.1 in)
- **Height:** 18.6cm (10.1 in)
- **Weight:** 3.63 kg (10.1lbs)

SYSTEM

- Android operating system
 - Wifi & Bluetooth
 - USB
 - Multi-language user interface
 - 4G/5G Compatible with Hotspot*
- *Hotspot / Cellular plan not provided by Videray.

BATTERIES

- 4-6 hrs battery life at typical duty cycles per battery
- 2 battery packs
- 110/220V AC 1-Bay Rapid charger

SUPPORT

- Complementary OTA Software Updates
- Complimentary Email/Phone Support
- Complimentary Virtual Training
- On-site training Available
- Extended Warranty Available

TRANSMISSIONS PANEL OPTIONS

- MTP+ 14x17 in
 - MTP+ 10x13 in
- **See MTP+ Datasheet for more details

IMAGING & INSPECTION ADVANTAGES

- Handheld
- Wireless transmission panel and image capture
- 7in High Resolution, 700Nit, Color Touchscreen
- Quick action buttons on handles
- Store up to 15,000 images
- Flexible image export options
- Field of view alignment line lasers and camera live view

TRANSPORT CASE OPTIONS

- Lockable hard case with wheels (IP67, MIL-SPEC)

SAFETY

- Revolutionary & patent pending built-in shielding
- Visual indicator lights and interlocks to prevent inadvertent X-ray emission
- Password required for operation
- Configurable Single/Dual Trigger Modes
- Front facing flashlight
- Contains no live radiation source