

Suspect Package Training

Postal and Baggage Screening

Course Objectives

The aim of this course is to educate and inform your staff about modern day terrorist threats concerning the organisation's incoming mail & front of house routine, equip them with the necessary skills for intelligent suspect package recognition and subsequent risk management.

By raising awareness and encouraging planning and preparedness, this course will help to protect your resources and assets, allay fears, reduce panic, and ensure continuity of workflow. It will also serve to reduce uncertainty and get delegates thinking positively about enhancing your contingency arrangements and building evacuation procedures.



Who should attend?

Anyone with responsibility for risk management, contingency planning, facilities management or security management, including front of house staff and security personnel.

Anyone tasked with the responsibility for handling incoming mail (letters, packets or parcels) from postal operators or private carriers. Such individuals may include front of house staff, post room staff, security personnel, receptionists, internal messengers, secretaries, personal assistants and porters.

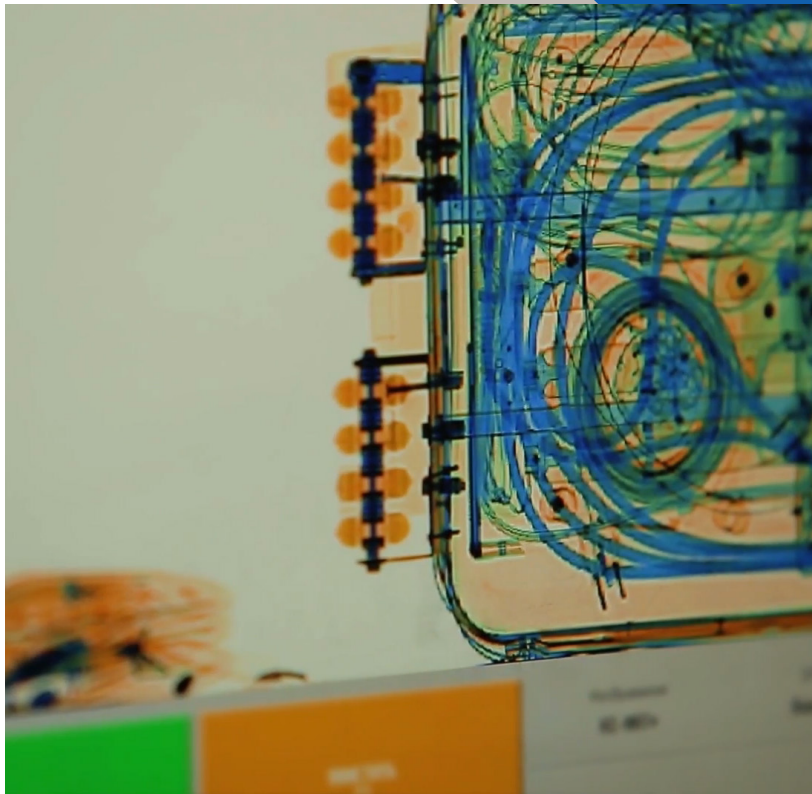
In partnership with
Train2Protect (T2P) International Ltd



Why you should attend

This course will show you how to manage 21st century risks in a reasonable and responsible manner, and in a way that allows you to minimise any disruption to your enterprise. Recent events have highlighted how the terrorist world has changed and become more disparate and fragmented in recent years.

By far the safest methods of delivering an act of terrorism to an organisation or a high profile individual, with the least chance of being detected, is either to enter an organisations premises and simply place the item in such a way as appear innocuous or by having the item delivered via the postal system. Thus, your collective safety, together with the burden of being alert and acting responsibility, rests firmly upon your own staff.



Course Content

- **Threat** - a general overview of the current threat, threat levels and how they may affect business
- **An overview of recent and historical postal attacks**
- **Method of attack** - potential methods and types of devices
- **Effects of explosives** - this can assist delegates with determining evacuation procedures
- **Action on find** - includes explosive, non-explosive, legal and illegal finds
- **White powders** - both biological and chemical
- **Postal devices** - additional risk identifiers

Todd Research Limited Standard Terms & Conditions apply E&OE.

Threat from suspect devices is not exclusive to any one sector, consequently over many years Todd Research has built an enviable reputation partnering with organisations as diverse as Government, Embassies, Global Banking, Pharmaceutical, Oil & Gas, Legal, Media, Facilities Management, Retail and many more. Call Todd Research to understand how we can help protect you, your personnel and assets.

Todd Research Limited

9C Trafalgar Way | Bar Hill | Cambridgeshire | CB23 8SQ | UK

tel: +44 1480 832202

email: xray@toddresearch.co.uk

web: www.toddresearch.co.uk

