

Features and Benefits

Feature	Benefit
Image Enhancement	
EPD™ Enhanced Powder Detection	Heightened ability to identify threats conveyed via powder based elements.
Digital camera and powerful generator	Hi resolution images with increased ability to detect smaller threat items.
Negative Image Function	Identification of high density materials. e.g. (metal) shown up white against a black background.
High Density Alert (TR15)/ Enhancement (TR40)	Facilitates the identification of materials such as plastic explosives/incendary materials.
3 Point Density Alert (TR15)/ Enhancement (TR40)	Highlighting elements of 'suspect devices', including individual components e.g. detonators & batteries.
Operating System	
Smart Card login	Designated access with record of all operator sessions.
Touch screen interface	Quick selection of tools for rapid verification that objects are "Safe or Suspect."
Session data	Manage operator usage and record of suspect items.
Administrator Function	Levels of access and functionality can be set by Administrator.
Operator Icon toolbar (TR40 only)	Quick selection of tools to verify if object is "Safe or Suspect" then to store or share the image.
Image Storage & Sharing	
Export images	A hard copy library can be created for reference or to aid image share.
Automatic Image archiving	Cross reference and accelerated referral to security personnel.
Image Email Functionality	Enables a second opinion, and quick escalation to key decision makers.

Product Specification

Image and Unit Performance

- Touch Screen LCD 22" Monitor
- Resolution 1920 x 1080 pixels
- Wire Resolution: 36 AWG
- Steel Penetration: 3 mm

X-ray Generator

- 70KV measured at Target Screen 4.0mA

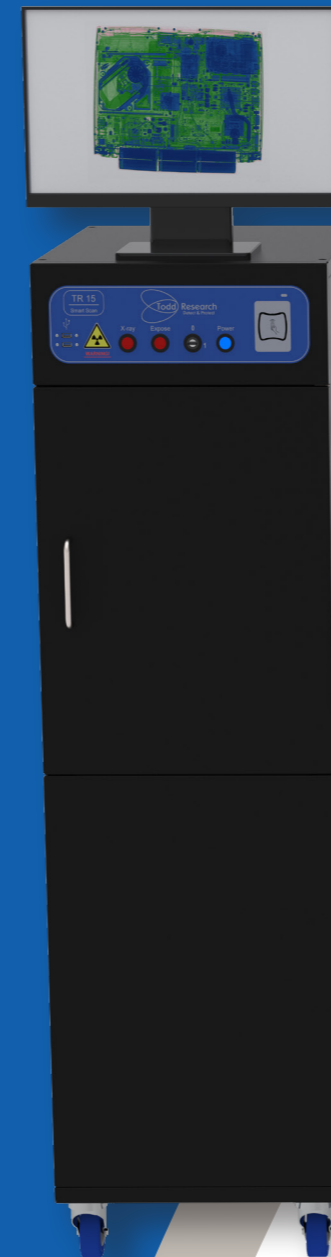
Operating Requirements & Environment

- Single Phase 115V/230V, 50/60 Hz, 350W / 1180VA
- Operating Temp.: 5°C to +40°C
- Storage Temp.: -15°C to +50°C
- Relative Humidity: 85% non condensing
- Supplied with 2m power cable

Health & Safety and Compliance

- All Todd Research equipment complies with applicable International Health & Safety regulations
- Ionising Radiation Regulations 2017 (IRR17) Leakage dose at outer surface <1.0µSv/h
- Complies with European Directives
- Electromagnetic compatibility (EMC) 2014/30/EU
- Low Voltage (LVD) 2014/35/EU
- Complies with United Kingdom regulations
- S.I. 2016 No. 1091 Electromagnetic compatibility Regulations 2016
- S.I. 2016 No. 1101 Electrical Equipment (Safety) Regulations 2016

TR15/TR40 +Smart Scan Cabinet X-ray Scanners



Comprehensive E-learning Package available with these products

Todd Research Limited Standard Terms & Conditions apply E&OE.

Threat from suspect devices is not exclusive to any one sector, consequently over many years Todd Research has built an enviable reputation partnering with organisations as diverse as Government, Embassies, Global Banking, Pharmaceutical, Oil & Gas, Legal, Media, Facilities Management, Retail and many more. Call Todd Research to understand how we can help protect you, your personnel and assets.

Todd Research Limited

9C Trafalgar Way | Bar Hill | Cambridgeshire | CB23 8SQ | UK

tel: +44 1480 832202

email: xray@toddresearch.co.uk

web: www.toddresearch.co.uk

Todd Research
Detect & Protect



Todd Research Limited

9C Trafalgar Way | Bar Hill | Cambridgeshire | CB23 8SQ | UK

tel: +44 1480 832202

email: xray@toddresearch.co.uk

web: www.toddresearch.co.uk

Todd Research
Detect & Protect

The very latest generation TR15 and TR40 +Smart Scan cabinet scanners from Todd Research, provide a new benchmark of threat detection and image management for compact cabinet scanners. At the heart of the TR15 and TR40 +Smart Scan is a complete new software platform, managing the functionality and an intuitive user interface via a 22 inch touch screen monitor. The smart card login means the TR15 and TR40 +Smart Scan can be configured to enable data collection of individual user sessions further enhancing the effectiveness of the operators.

The TR15 is our compact X-ray scanner with impressive detection capabilities - with its small footprint, low maintenance costs and a host of detection features, the TR15 +Smart Scan is the scanning solution of choice.

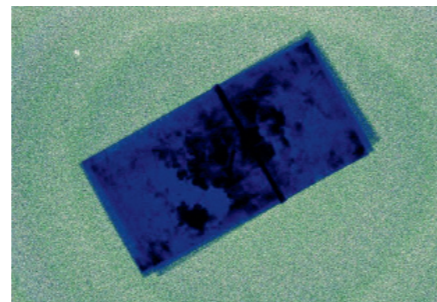
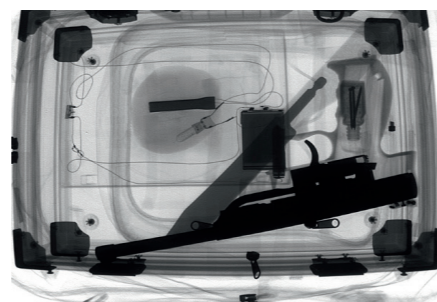
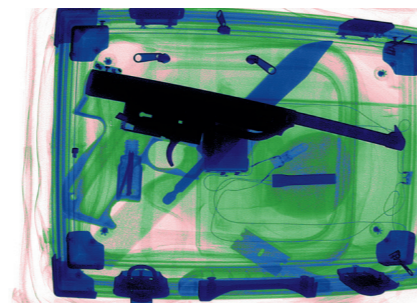
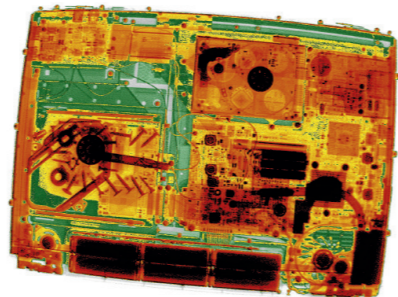
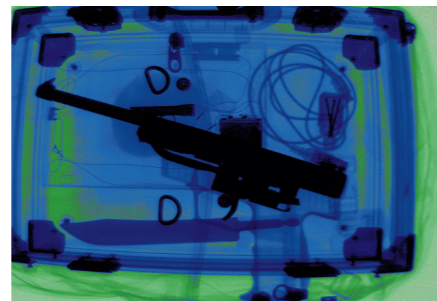
The TR40 is the largest cabinet scanner in the range, the generous chamber can accommodate mail sacks, large boxes and courier deliveries, with its one touch operation the TR40 allows rapid processing of scanned items all within a compact footprint.

We See Things Differently

The in-built enhancement tools of the TR40 enable the captured image to be further investigated. The remote networking capabilities make for easy sharing and storage of images and can be utilised as part of the organisations escalation process. With Enhanced Powder Detection (EPD™) software as standard, powder based threats items can also be interrogated.

A History of Delivering

As a leading manufacturer of safety and security equipment, Todd Research demonstrates over 70 years in the provision of threat detection equipment creating innovative solutions to combat a range of threats, including homemade and Improvised Explosive Devices (IED) as well as biological threats both chemical and powder.



Cabinet X-ray Scanners Can Be Used For Multiple Applications:

- Mail Rooms
- Reception Areas (Scanning of Post)
- Goods In (Screening of parcels)
- Executive Mail Screening
- Loss Prevention
- Contraband Detection

High Definition imaging for the detection of IEDs, Powder Threats and Weapons sent via the mail.

High quality digital camera and enhanced X-ray generator delivers superior image quality for greater detection.

Image storage locally or onto an external hard drive or network for easy reference and verification.

Operators are assigned a login, management can map who is using the scanner and when.

Image email functionality enables escalation of potential suspect images to security professionals.

Enhanced EPD™ software allows greater recognition of “powder” threats.

User friendly touch screen interface providing access to all enhancement tools enabling rapid image processing.

All user data - date, operator’s login, name, session time, no. of exposures made, log off time etc are captured in the Microsoft Access™ database.

3 point density alert - Operator can define the elements of a ‘suspect devices’ such as metal components e.g. detonators and batteries.

Compliance with Ionising Radiation Regulations 2017 (IRR17).

WIFI Ready (can be added as an optional extra).

General Dimensions

TR15 +Smart Scan

Cabinet
 Height: 1540 mm
 Width: 455 mm
 Depth: 670 mm
 Net Weight: 170 kg

Inspection Chamber

Height: 535 mm
 Width: 440 mm
 Depth: 580 mm

Image Area

Width: 380 mm
 Depth: 520 mm

Door Opening

Height: 530 mm
 Width: 365 mm

TR40 +Smart Scan

Cabinet
 Height: 1670 mm
 Width: 570 mm
 Depth: 590 mm
 Net Weight: 182 kg

Inspection Chamber

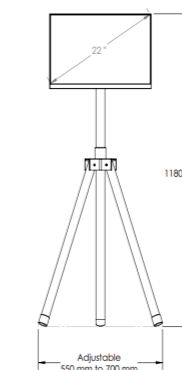
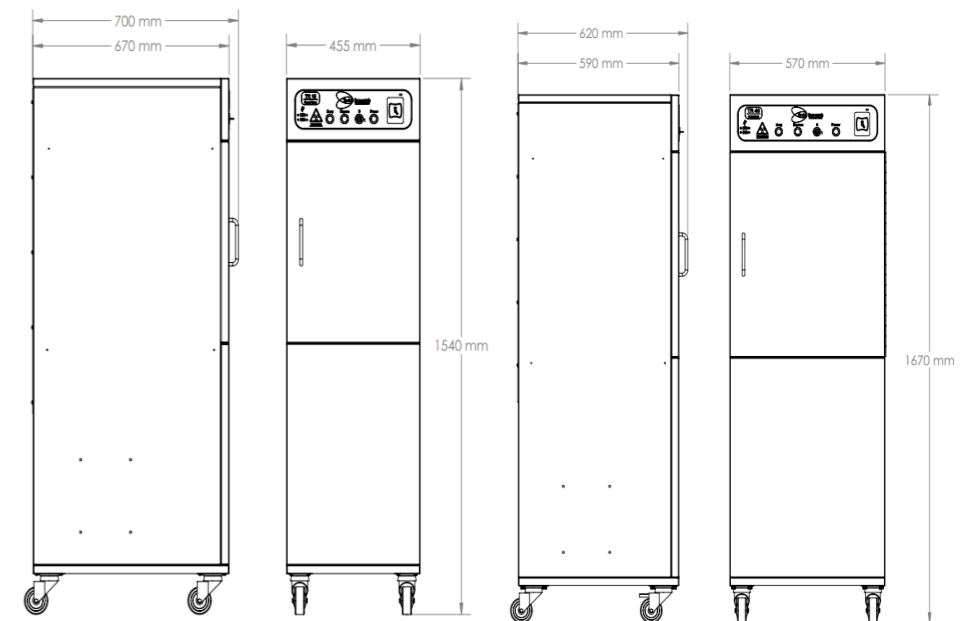
Height: 600 mm
 Width: 555 mm
 Depth: 505 mm

Image Area

Width: 480 mm
 Depth: 440 mm

Door Opening

Height: 600 mm
 Width: 480 mm



Monitor Stand included with TR40 +Smart Scan, optional extra with TR15 +Smart Scan.