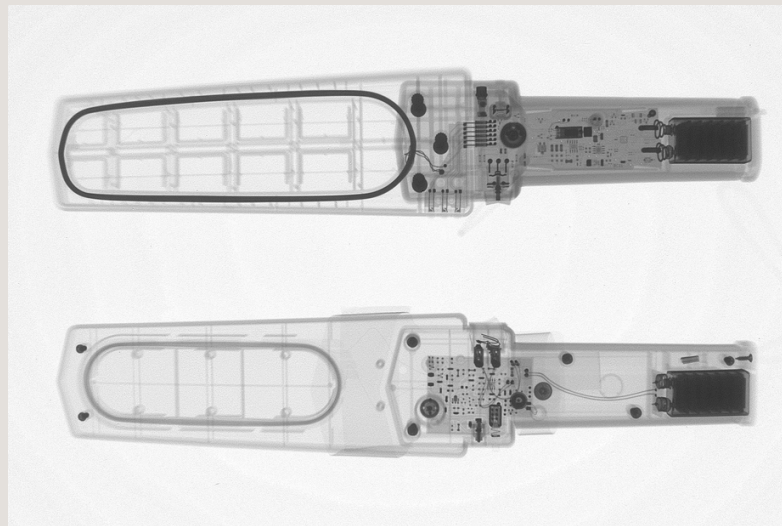
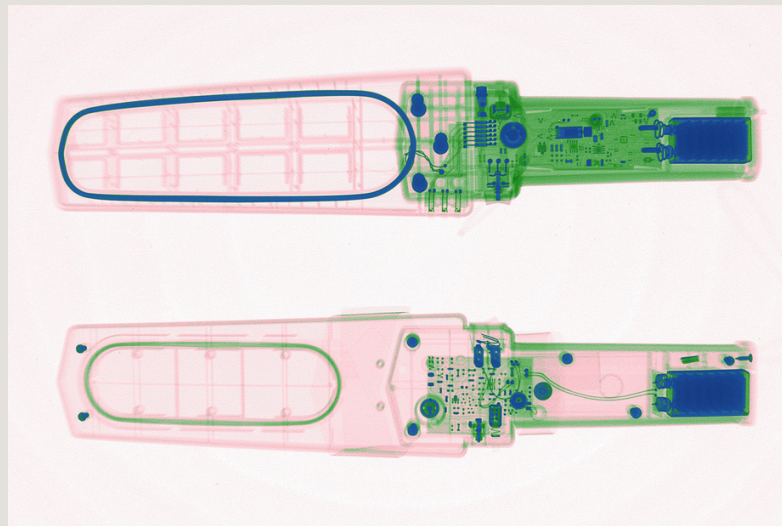


Future Ready Technology

As technology evolves, so does Todd Research's commitment to staying ahead of the curve. The TR15-NDT Cabinet X-ray Machine is built with future-ready technology, ensuring that your investment remains relevant and effective for years to come. Regular software updates and compatibility with emerging industry standards make this machine a sound investment in the face of the ever-changing NDT requirements.

Our NDT Cabinet X-ray Machine is not just a piece of equipment; it's a game changer for industries reliant on non-destructive testing. Elevate your testing capabilities, enhance precision, and streamline your operations with a machine that reflects our commitment to innovation and excellence.



Product Specification

Image and Unit Performance

- Touch Screen LCD 22" Monitor
- Resolution 1920 x 1080 pixels

X-ray Generator

- 80KV measured at Target Screen 4.0mA

Operating Requirements & Environment

- Single Phase 115V/230V, 350W / 1180VA
- Operating Temp.: 5°C to +40°C
- Storage Temp.: -15°C to +50°C
- Relative Humidity: 85% non condensing
- Supplied with 2m power cable

Health & Safety and Compliance

- All Todd Research equipment complies with applicable International Health & Safety regulations
- Ionising Radiation Regulations 2017 (IRR17) Leakage dose at outer surface <math><1.0\mu\text{Sv/h}</math>
- Complies with European Directives
- Electromagnetic compatibility (EMC) 2014/30/EU
- Low Voltage (LVD) 2014/35/EU
- Complies with United Kingdom regulations
- S.I. 2016 No. 1091 Electromagnetic compatibility Regulations 2016
- S.I. 2016 No. 1101 Electrical Equipment (Safety) Regulations 2016

TR15-NDT

Cabinet X-ray Scanner



Todd Research Limited Standard Terms & Conditions apply E&OE.

Threat from suspect devices is not exclusive to any one sector, consequently over many years Todd Research has built an enviable reputation partnering with organisations as diverse as Government, Embassies, Global Banking, Pharmaceutical, Oil & Gas, Legal, Media, Facilities Management, Retail and many more. Call Todd Research to understand how we can help protect you, your personnel and asset s.

Todd Research Limited

9C Trafalgar Way | Bar Hill | Cambridgeshire | CB23 8SQ | UK

tel: +44 1480 832202

email: xray@toddresearch.co.uk

web: www.toddresearch.co.uk



Todd Research Limited

9C Trafalgar Way | Bar Hill | Cambridgeshire | CB23 8SQ | UK

tel: +44 1480 832202

email: xray@toddresearch.co.uk

web: www.toddresearch.co.uk



Introducing the Cutting-Edge TR15-NDT Cabinet X-Ray Machine: Revolutionising Non-Destructive Testing for Unparalleled Precision

In the dynamic world of Non-Destructive Testing (NDT), precision, efficiency, and reliability are paramount. Our state-of-the-art TR15-NDT Cabinet X-Ray Machine stands at the forefront of technological innovation, offering a ground-breaking solution that elevates your testing capabilities to unprecedented heights.

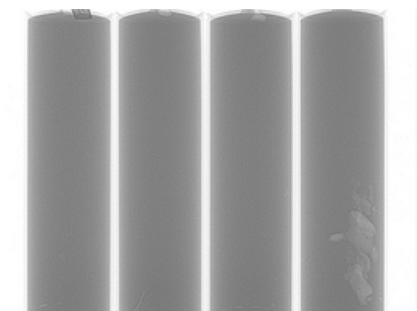
Unrivaled Precision and Accuracy

At the heart of the TR15-NDT Cabinet X-Ray Machine lies advanced technology designed to deliver unparalleled precision and accuracy. The machine employs cutting-edge X-ray imaging techniques, allowing you to inspect and analyse objects with meticulous detail. This level of precision is essential for industries where safety and quality assurance are non-negotiable, such as aerospace, automotive, and manufacturing.



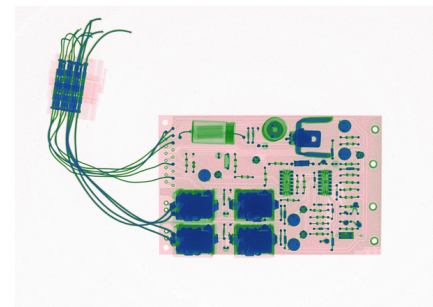
Intuitive User Interface for Seamless Operation

We understand that time is of the essence in your industry, which is why our NDT Cabinet X-Ray Machine boasts an intuitive and user-friendly interface. With a streamlined control panel and user-friendly software, operators can quickly set up, configure, and execute tests with ease. This intuitive design minimises training time, empowering your team to focus on what matters most – obtaining accurate results efficiently.



Versatility for Diverse Applications

The TR15-NDT is engineered to meet the diverse needs of various industries. From inspecting complex aerospace components to automotive parts and electronic assemblies, this versatile machine adapts to the unique requirements of each application. Its adjustable settings and customisable parameters ensure flexibility, making it an invaluable asset across a spectrum of NDT scenarios.

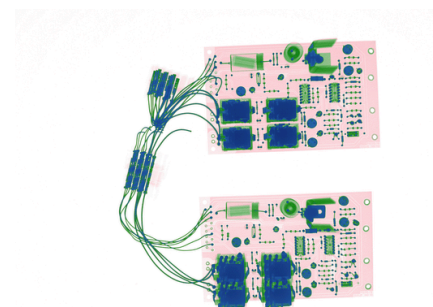


Enhanced Safety Features

Safety is our top priority, and the TR15-NDT is equipped with a comprehensive set of safety features to protect both operators and the environment. Radiation shielding, interlock systems, and real-time monitoring ensure that every operation is conducted with the utmost care and compliance. With these safety measures in place, you can confidently carry out NDT processes without compromising the well-being of your team.

Increased Throughput and Cost-Efficiency

Boosting productivity without sacrificing quality, our NDT X-Ray Machine is designed for increased throughput. The high-speed imaging capabilities, combined with efficient workflow management, allow you to conduct tests in a fraction of the time compared to traditional methods. This not only saves valuable time but also translates to significant cost savings over the long run.



High quality **digital camera** and enhanced X-ray generator delivers superior image quality for greater detection.

Image storage locally or onto an external hard drive or network for easy reference and verification.

Operators are **assigned a login**, management can map who is using the scanner and when.

Measuring Tool enables the user to effectively measure defects within the scanned items.

Enhanced EPD™ software allows greater **imagery of "powder based" items**

User friendly touch screen interface, providing access to all enhancement tools enabling rapid image processing.

All user data - date, operators login, name, session time, number of exposures made, log off time etc are captured in the Microsoft Access database

3 point density alert - Operator can define the elements of the scanned item, such as metal components, circuit boards, connectors, and powders.

Compliance with Ionising Radiation Regulations 2017 (IRR17)

WIFI Ready (can be added as an optional extra).

General Dimensions

TR15-NDT

Cabinet

Height:	1540mm
Width:	455mm
Depth:	670mm
Net Weight:	170kg

Inspection Chamber

Height:	535mm
Width:	440mm
Depth:	580mm

Image Area

Width:	380mm
Depth:	520mm

Door Opening

Height:	530mm
Width:	365mm

